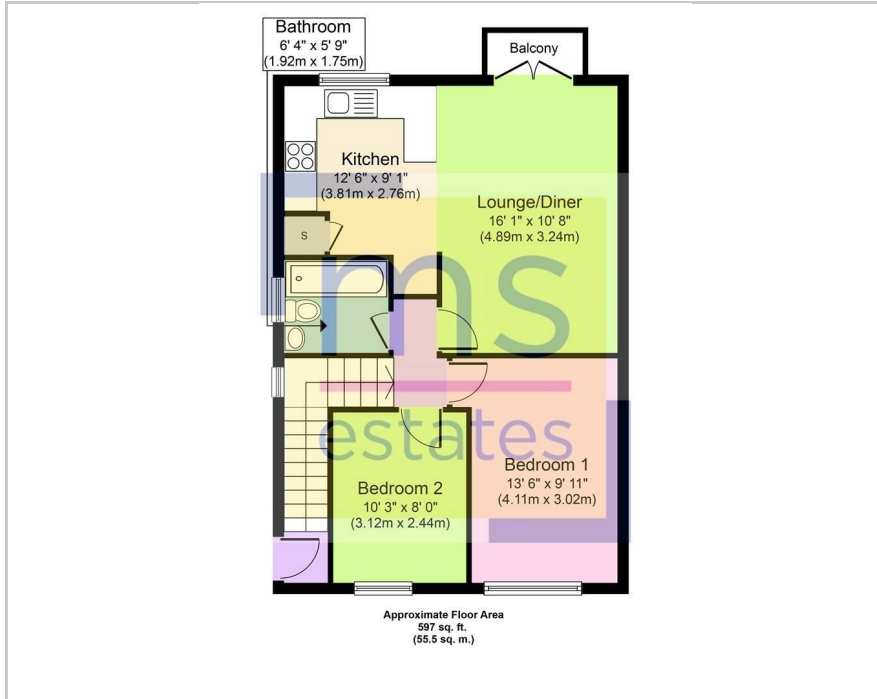




80 Lenton Manor, Nottingham, NG7 2FP
£965 Per Month



Floor Plan



- Two bedroom maisonette with garage
- Available 17th August
- Unfurnished
- Very well presented throughout
- Large open plan lounge/kitchen
- Modern bathroom with shower over bath
- Garage and additional undercover parking
- Double glazed
- Excellent location, close to QMC & UoN



Area Map



Energy Efficiency Rating

	Current	Potential
<i>Very energy efficient - lower running costs</i>		
(92 plus) A		
(81-91) B		
(69-80) C	75	75
(55-68) D		
(39-54) E		
(21-38) F		
(1-20) G		
<i>Not energy efficient - higher running costs</i>		
England & Wales	EU Directive 2002/91/EC	

These particulars, whilst believed to be accurate are set out as a general outline only for guidance and do not constitute any part of an offer or contract. Intending purchasers should not rely on them as statements of representation of fact, but must satisfy themselves by inspection or otherwise as to their accuracy. No person in this firm's employment has the authority to make or give any representation or warranty in respect of the property.

3 Park Street, Derby Road, Lenton, Nottingham, NG7 1RR

Tel: 0115 9120061 Email: mail@ms-estates.co.uk www.ms-estates.co.uk